

# Anyhertz Drive (Shenzhen)Co.,Ltd.



Variable Speed Drive  
Elevator Inverter  
Soft-Starter  
HMI



# Anyhertz Drive (Shenzhen)Co.,Ltd.

## Company Profile



Anyhertz Drive(Shenzhen) Co.,Ltd, was established in 2005, is committed to be the globally leading and respected provider for products and services of industrial automation. It has always been dedicated to the R&D, manufacture and marketing of AC drive products. In the year of 2011, a team of influential experts in the industry joined in the company. And the company entered into a new period of rapid development with its new name, Anyhertz Drive (Shenzhen) Co.,Ltd . We located in the heart of Shenzhen, occupying an area of 3000 square meters. Currently, the company have more than one hundred staff, including 30 professional technical persons and most of them came from well-known enterprises in the industry. So far, Anyhertz products include VF control inverter , sensor-less vector control inverter, open loop elevator inverter and economic and compact inverter ,which are widely applied to textile, printing, plastics, pharmacy, cable, crane, extruder, refrigerator, ball mill, water supply, civil engineering, mining, petrochemical and HVAC etc. By virtue of the most advanced designing concept and technology, Anyhertz has constantly perfected the performance of the products. Meanwhile, we are strictly operating in accordance with ISO9001:2000 Quality Management System. All of products have won CCC and CE approval



Having a fully developed marketing network at home, we have branch offices in Southern China, Eastern China, Northern China, North-East China and South- West china to provide sound sales and after-sales service. Furthermore, via trading company, our products have been shipping to overseas in over 10 countries and regions, such as Russia, Pakistan, India and south-east Asia, etc.



Tech advance, life improved



# PRODUCT RANGE



**FST500**  
Compact Drive  
0.4kW~7.5kW



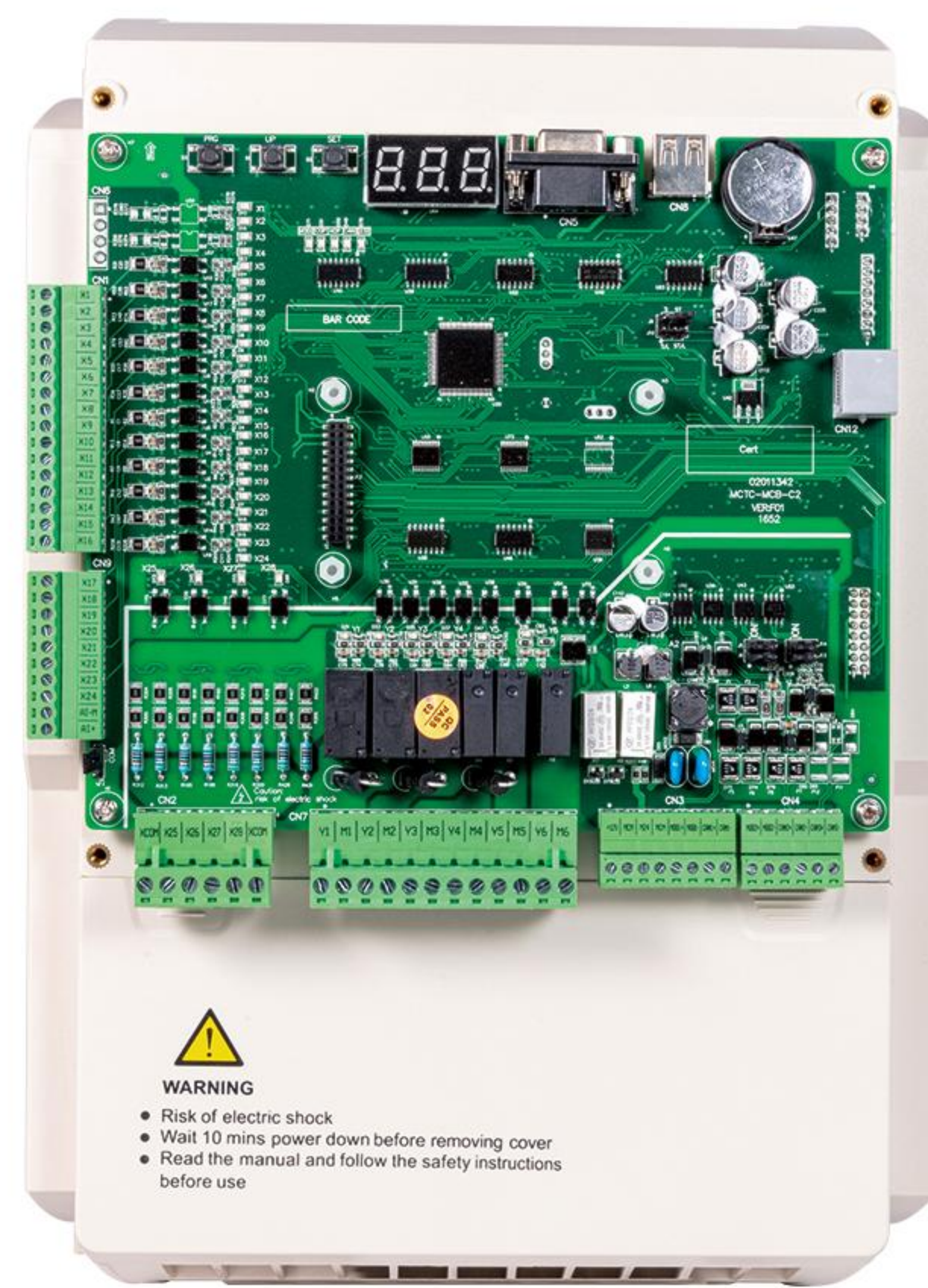
**FST650L**  
General Purpose  
0.4kW~15kW



**FST650L**  
General Purpose  
18kW~630kW



**FST820**  
Elevator AC Drive  
5.5kW~37kW



**FST860**  
Elevator Controller  
5.5kW~37kW



**FST520**  
Smart Pump Drive  
0.75kW~11kW



**FST631**  
Compact Drive  
0.4kW~5.5kW



**HMI Touch Panel**  
Resistive TFT  
4.3/7/10.1inch



**Soft starter**  
7.5kW~320kW



## Mini Ac Drive FST500 Series

FST-500 series frequency converter is of high quality, low noise and multi-function suitable for various working conditions. Universal frequency converter. The optimized space vector PWM control is adopted for smooth operation. The imported IGBT power module is adopted, with the maximum carrier frequency of 15kHz and flexible control mode.



## Application Fields:

Packing machine Dumpling machine Treadmill Food mixing machine Grinding machine Drilling machine Coating machine Small milling machine Small hydraulic pressure Small lathe wood working machine Chip moulder

## Main features:

Compact structure, small volume, low weight  
Various protection technology, strong anti-interference capacity  
V/F curve can be set and acceleration and deceleration function can be automatically adjusted  
Low noise, carrier frequency is 0 – 15KHZ  
In built PID function  
Automatic torque increase and automatic slip compensation function  
Energy saving operation mode and automatic constant voltage modulation function (AVR)  
Sleep/waking function and zero speed maintaining function  
In built RS-485 communication interface

## Power Range:

0.4KW-2.2KW 220V single phase

0.4KW-5.5KW 220V 3 phase

0.75KW-7.5KW 380V 3 phase



# Sensorless Aactor Control Compact Drive FST650L Series

FST650L series is a high performance general purpose AC drives integrated with the most advanced open & closed-loop vector control (over 15kW optional). It can drive normal and multiple-frequency AC asynchronous induction motors with excellent control performance. Furthermore, it is designed to be robust with large capacity for heavy duty and complicated motor driving applications.



## Application Fields:

Extruders, rubber millers, injection molding machines, pipe bending machines, conveyance systems, winding machines, bridge cranes, stage lifting systems, glass tempering furnaces, electromagnetic stirrers, fans, pumps, Food packaging machinery, etc.

## Specifications:

1. Output frequency 0~500Hz/3200Hz optional
  2. Feedback Vector Control Torque 180% at 0Hz
  3. Overload Normal Duty: 150% of rated current for 60 seconds  
180% of rated current for 3 seconds  
Heavy Duty: 120% of rated current for 60 seconds  
150% of rated current for 3 seconds
  4. Linear V/F curve, multi-point V/F curve/ Square V/F curve
  5. Multiple protect functions: Motor short-circuit detection at power-on, phase loss protection, overcurrent protection, overvoltage protection, undervoltage protection, overheat protection and overload protection
  6. Main control functions: Torque control, Speed control, Non-stop at momentary power failure, 16-step speed, Motor auto-tuning, Parameter copy, KEY locking and function selection Simple PLC, process PID, Torque compensation, JOG frequency, AVR...
- \*built-in brake unit under 30kW

## Power Range:

220V 1phase to 3 phase/220V 1phase to 380V 3phase  
380V 3phase to 3 phase 0.75kW~630kW/open loop elevator series 5.4kW~37kW  
690v 3phase to 3 phase 37kW~1400kW



# Closed Loop Elevator AC Drive FST820 Series

The FST820 E is a new-generation high-performance closed loop vector control AC drive for elevator applications independently developed and manufactured by Shenzhen robotsy MEE Limited. It adopts advanced algorithms such as motor vector control and smooth curve calculation based on Robotsy many years' experience in the elevator application industry.

## Application Fields:

Lift, Elevator

## Specifications:

1. Drive both the asynchronous motor and permanent magnetic synchronous motor (PMSM), and provide multiple encoder interfaces.
2. Support motor auto-tuning (static auto-tuning and complete auto-tuning).
3. Support multiple speed sources, multi-speed and analog setting.
4. Guarantee good elevator riding comfort with flexible startup curves, multi-segment S-curve setting, and four groups of acceleration/deceleration time.
5. Support emergency evacuation at power failure with the 48 V battery power supply.
6. Provide various elevator-related functions, including enable detection, brake contactor control, output contactor control, slow-down judgment, overspeed protection, speed deviation detection, door preopen, contact stuck detection, motor overheat detection, and startup pre-torque compensation.
7. Support connection to the external operation panel through the EJ45 interface, making the operation and commissioning simpler and easier.
8. Provide the built-in DC reactor and braking unit, which improves the output power factor and reduces costs of peripheral devices.
9. Separate air duct with conformal coating process, professional manufacturing platform, and advanced price make good product quality.
10. Have the lightning protection design and the strong anti-interference capability, compliant with the EMC standard.

**Power Range:** 380V 3 phase/7.5kW ,11kW/15kW





# Elevator Controller FST860

The FST860 is a new-generation integrated elevator controller based on a large number of applications and combining new industrial features. The FST860 integrated elevator controller has the following advantages:

It supports high-performance vector control and open-loop low speed running. It can drive both AC asynchronous motor and permanent magnetic synchronous motor (PMSM), and implement switchover between the two types of motors easily by modifying only one parameter.

It supports direct parallel control of two elevators and group control of multiple elevators, and supports the CANbus and Modbus communication protocols for remote monitoring, which reduces the required quantity of traveling cables.

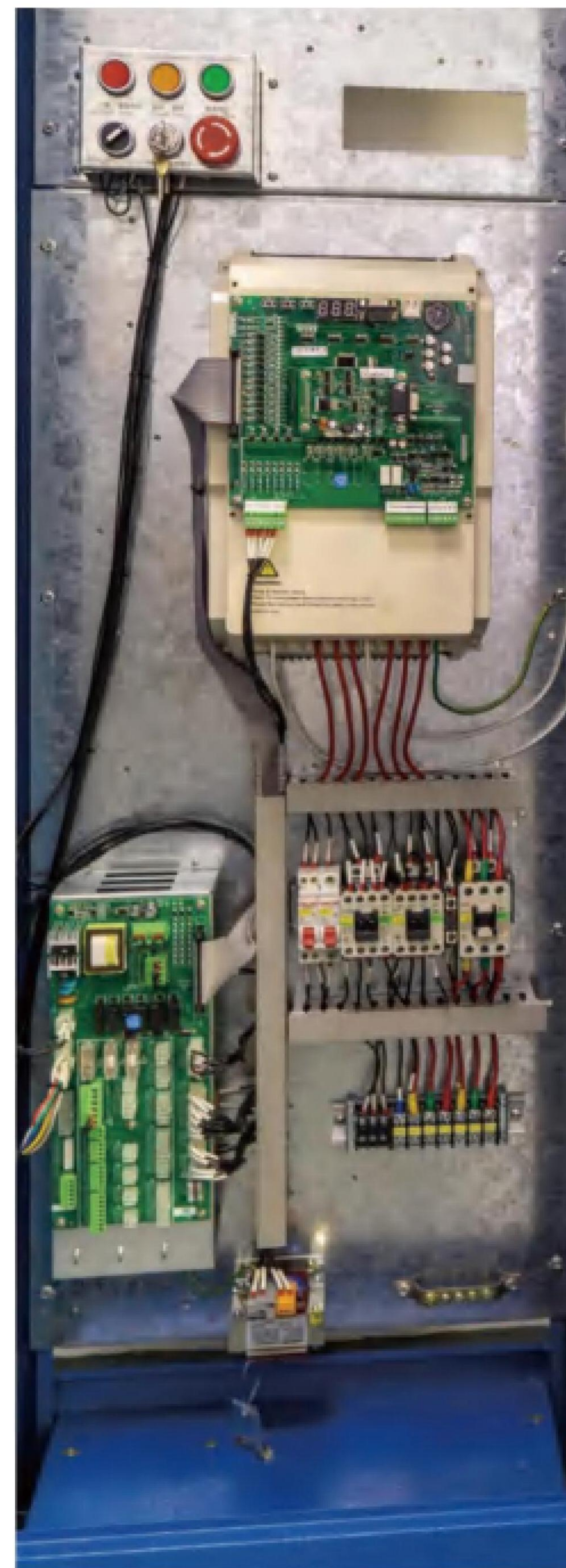
It supports a maximum of 40 floors and is widely applied to elevators used in the residence, office buildings, shopping centers, and hospitals.

It adopts the distance-based direct stop technology, with N curves generated automatically, achieving convenient and comfortable riding.

It provides multiple commissioning tools, onboard keypad, operation panel, and host computer monitoring software (NEMS), making inspection, commissioning, and maintenance of the elevator easy and convenient.

## Power Range:

380V 3 phase/5.5kW~37kW





# Smart Pump Drive FST520 Series

SFT520 series smart pump drive has an Ip65 rated enclosure, providing excellent dustproof and waterproof performance. It is possible to be mounted on various types of pump motor junction boxes and compatible with a broad range of pressure sensors. Our smart pump drive is featured by high reliability, low noise level, stable performance as well as easy operation.



## Application Fields:

Water plant, Public bath center, Agricultural irrigation



## Specifications:

Control Mode: V/F control

Startup Torque: 1Hz 100%

Speed Adjustment range: 1:20

Overload: 120% rated current for 60s

150% rated current for 1s

Linear, Square curve control

Main control functions: Multi-pump control, PID control, AVR function,

Wake-up function, Flow control function, Stall control, Antifreeze function,

Protection: Water leak detection, Dry run protection, High & Low Pressure warning

Standard RS485 Modbus communication

Excellent dustproof and waterproof performance

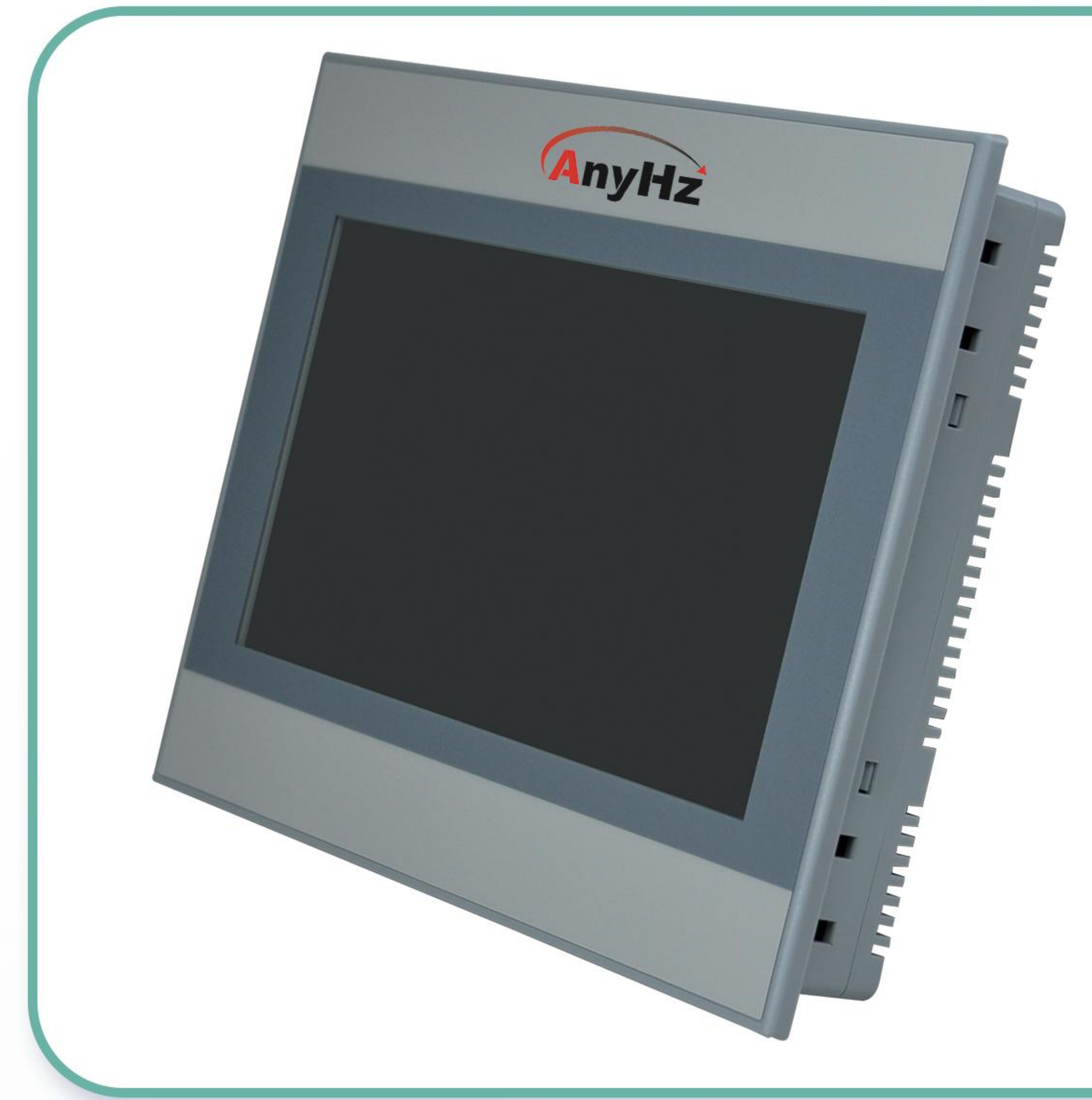
## Power Range:

380V 3 phase/0.75kW~11kW



# Touch Panel HMI-H uman Machine Interfaces

A human machine interface(HMI)is a platform which permits interaction between users and automation equipment.Advinver,s HMI products provide varions communication ports for fasr communication and convenient control of a diverse range of machines, systems and facilities.



## Application Fields:

The Advanced HMI adopts a narrow frame and wide screen design.It is equipped with morw than one COM port and an Ethernet port.Featuring a multilingual input function,it provides easy operationfor global customers.



## Specifications:

	Index	MR0501NE	MR0701NE	MR1001NE
Display	LCD display	4.3 inch TFT	7 inch TFT	10.1 inch TFT
	Resolutions	480*272	800*480	1024*600
	Brightness	400cd/m <sup>2</sup>	400cd/m <sup>2</sup>	350cd/m <sup>2</sup>
	Contrast	500:1		
	Backlight	LED		
	Backlight life	>30.000 hours		>50.000 hours
	Color	16.7M		
	Visua Angle	80/80/80/80		
Touch	Touch Screen	4-wire resistive type		
	Touch accuracy	Length (x-axis)±2%;		Width (y-axis)±2%;
Memory	Flash	128MB		
	RAM	64MB		128MB
	CPU	ARM Cortex-A7 Dual core 1GHz		
Communication ports	USB Host	USB 2.0*1		
	RS-232	COM1		
	RS-485	COM2: 2W/4W: COM3: 2W		
	Ethernet	10/100Mbps self-adaption		
	4G Remote	not support	Extensible	
	RTC	Built-in real-time clock		
Power	Input Voltage	9-36±10%VDC		
	Rated power	10W(420m@24VDC)		
	Power Isolation	Built-in		
	Withstand voltage	500VAC for one minute		
	Insulation Impedance	50MΩ@500VDC		



# Built-in By-pass Soft-Starter FST30

FST30 intelligent AC motor soft starter is a new type of motor starting equipment with current international advanced level designed and produced by power electronics technology, microprocessor technology and modern control theory. The product can effectively limit the starting current when the asynchronous motor starts.

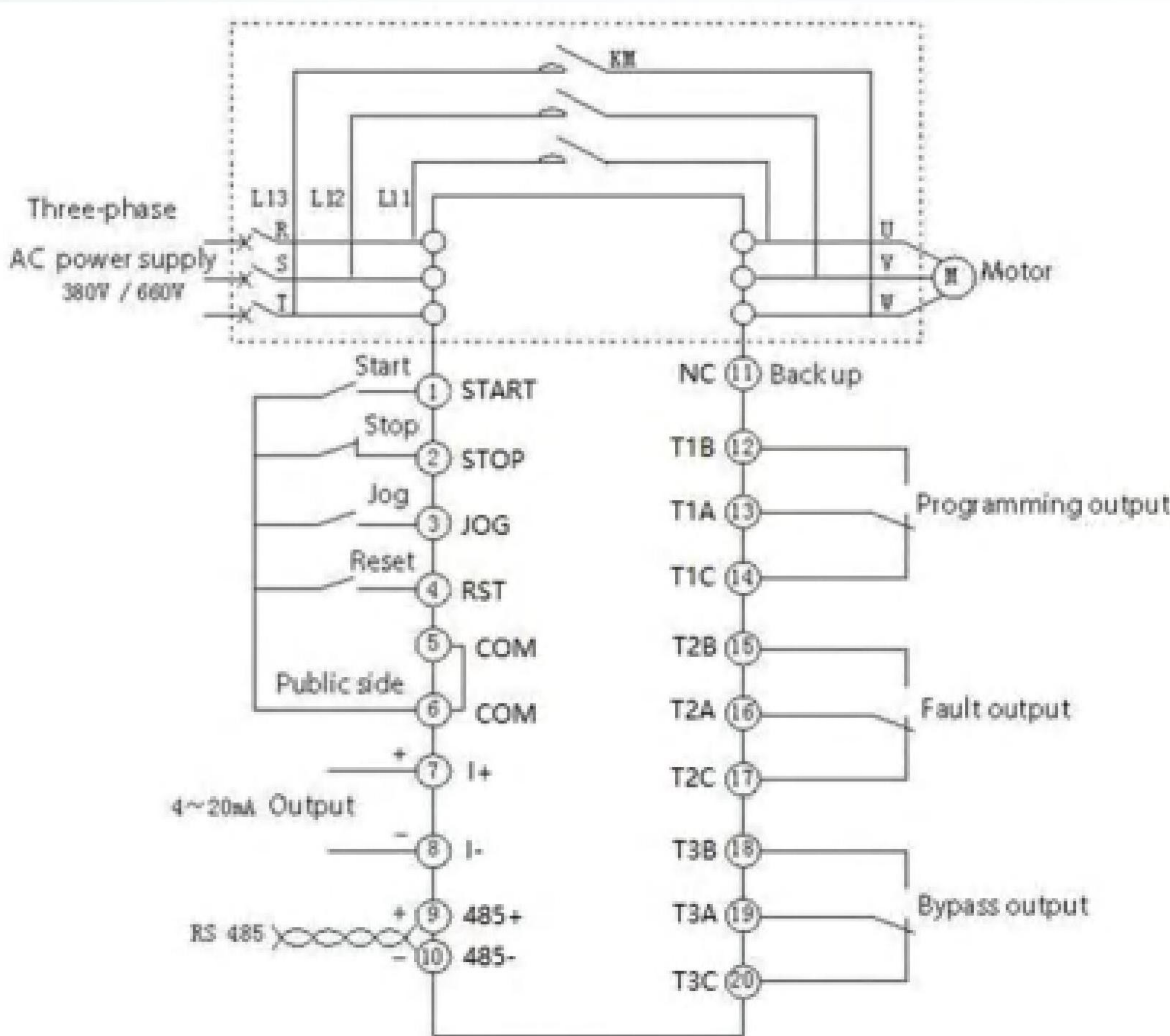


## Application Fields:

It can be widely used in loads such as fans, pumps, conveyors and compressors etc.

## Specifications:

1. Six kinds of starting modes can be selected to maximize the motor's optimal starting effect and soft stop.
2. Large-screen LCD machine interface, English and Russian display modes, easy to operate, 7-color backlight LCD display can reflect the different working conditions of the soft starter.
3. Variety of protection monitoring functions.
4. Provide 4~20mA analog output, RS485 communication interface



Power Range: 7.5kW~320kW



Tech Advance  
Life Improved



Learn more about our products at:  
[www.anyhz.com](http://www.anyhz.com)

Anyhertz Drive (Shenzhen)Co.,Ltd.

ADD: Floor 3,building a,Sanmin Industrial Park, Shuitian  
community,Shiyan street,Bao'an District,Shenzhen

P.O.: 518000

Tel: 86-755-83500685

Email: [sales2@anyhz.com](mailto:sales2@anyhz.com)  
[sales3@anyhz.com](mailto:sales3@anyhz.com)  
[sales8@anyhz.com](mailto:sales8@anyhz.com)  
[sales13@anyhz.com](mailto:sales13@anyhz.com)  
[sales15@anyhz.com](mailto:sales15@anyhz.com)  
[sales16@anyhz.com](mailto:sales16@anyhz.com)  
[lan@anyhz.com](mailto:lan@anyhz.com)